

# Gavin Central School

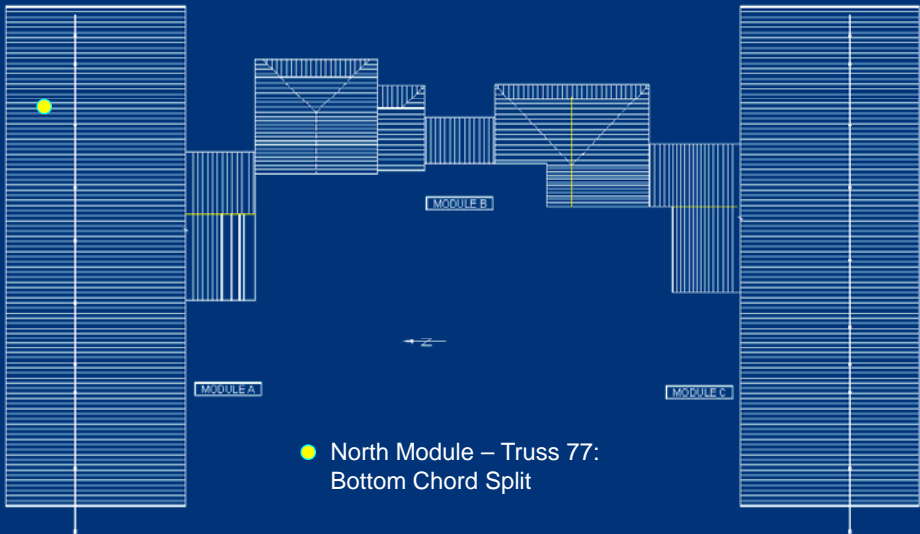
Ingleside, Illinois



## 2006 GAVIN INSPECTION

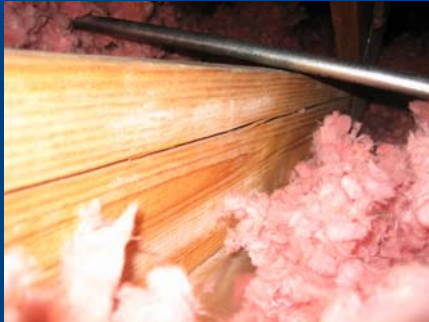
- Trusses inspected 6 months after completion of repairs. No additional repairs required.

# 2007 GAVIN INSPECTION



# 2007 GAVIN INSPECTION

## North Module – Truss 77: Bottom Chord Split

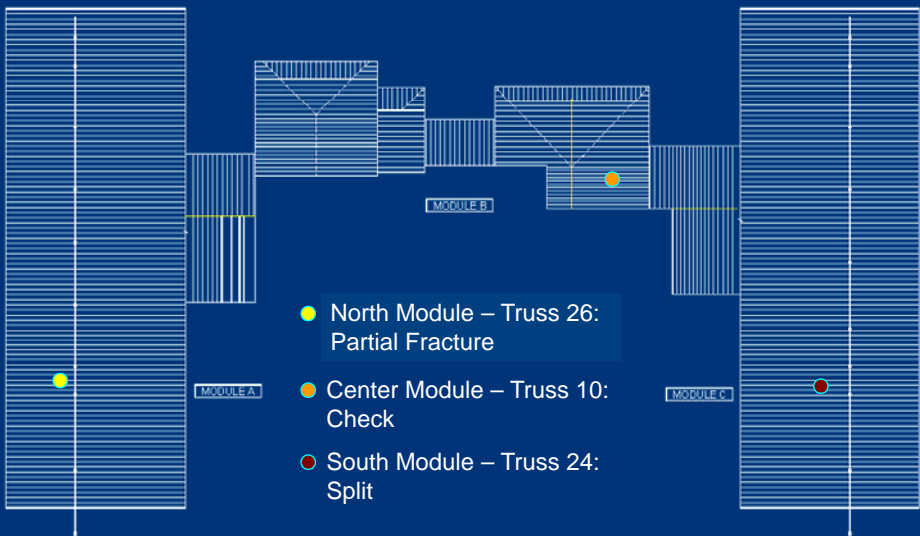


Bottom Chord Split



Repair: Install New Connector Plate

# 2008 GAVIN INSPECTION



# 2008 GAVIN INSPECTION

## North Module – Truss 26



Bottom Chord Partial Fracture



Install New Bolted Repair

# 2008 GAVIN INSPECTION

## Center Module – Truss 10



Bottom Chord Check



Install New Connector Plate

# 2008 GAVIN INSPECTION

## South Module – Truss 24



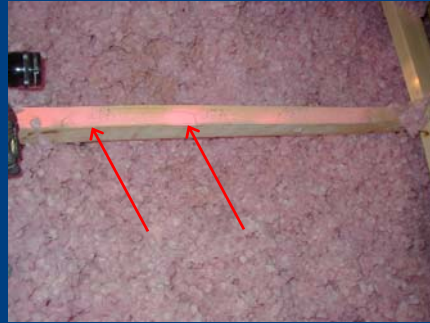
Bottom Chord Split



Install New Connector Plate

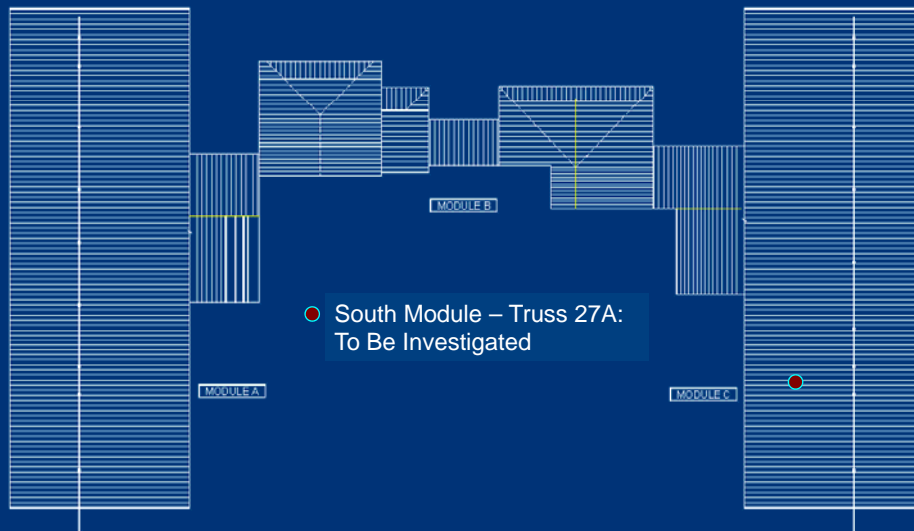
# 2008 GAVIN INSPECTION

South Module – Truss 27A



To Be Investigated

# 2008 GAVIN INSPECTION



## SUMMARY

- No repairs required following 2006 inspection.
- Conditions observed in 2007 and 2008 inspections are similar to previous conditions, but very limited relative to previous surveys.
- 3 of 4 repairs installed in 2007 - 2008 were preventative and non-structural.
- WJE 2007-2008 repairs are similar to previously installed WJE repairs.

## Repair Solution

- Fix the problem - reinforce the “weak links”
- Level of safety the same whether you repair or replace wood trusses.
- WJE repair solution includes additional redundancy by design.